

PROFILE

LANDMACON



_Landmacon



01

the company

our purpose
the personnel

02

services

locations

03

certifications

ISO 39001:2012
ISO 9001:2008
BSOHSAS18001:2007
ISO 14001:2004

04

projects

design
construction
environmental
maintenance
technical consultanting



_the company

Landmacon SA is a leading landscaping company providing design, construction, consulting and maintenance services in Greece and abroad. The company is based in Athens and operates all over Greece as well as abroad. The success lies in the combination of right planning and the know-how that we gained through our multi-year experience in the construction field.

_our purpose

The goal of the company is to provide a complete landscape design process. The dedicated staff undertakes the idea, until implementation, always according with the design guidelines, delivering a functional and aesthetic result that fully meets customer expectations.

.

_the personnel





Landmacon's team is well-trained and specialized, incorporating staff of a variety of scientific backgrounds with the aim of efficient and integrated management of each case. Our people are supplied with full top-quality equipment for the best possible result of any kind of work (crane, woodchopper, agricultural tractors, etc.)

Agriculturists, Engineers, Gardeners, machine operators and skilled technicians at landscape construction, are joining forces in order to achieve the best results with respect to the natural environment.

The training includes work instructions, safety and health at work, environmental awareness of pesticide use and waste management, as well as information and familiarization with new materials and machinery.

ISO 39001:2012
ISO9001:2008
BSOHSAS18001:2007
ISO14001:2004

Certified road safety system according to ISO 39001: 2012. which emphasizes the reduction/elimination of all dangerous situations arising from the company's activities, related to the transportation of materials and personnel.

The certified quality management system according to the requirements of ISO9001: 2008, aiming to the continuous improvement of the services provided and the best satisfaction of the client's requirements.

Certified health and safety management system in accordance with the requirements of the BSOHSAS18001: 2007 standard, aiming to create a working environment that ensures the health and safety for all those involved in the workplace as well as the elimination of dangerous incidents.

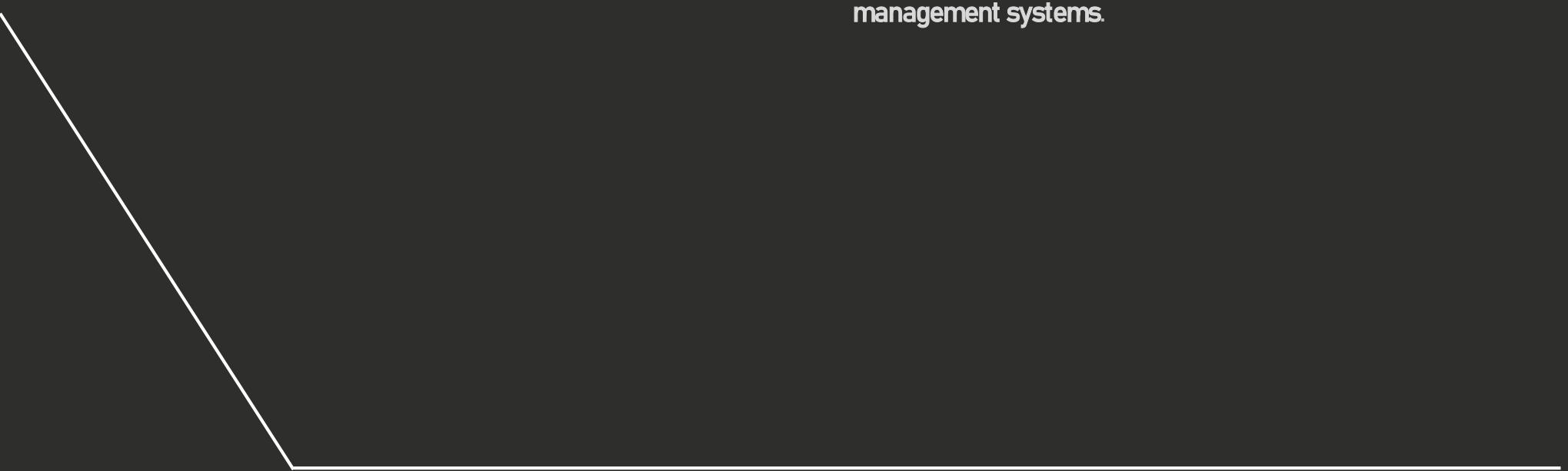
Certified environmental management system, in accordance with the requirements of ISO14001: 2004, which determines the material specifications (consumables) used and the waste management procedures.





_certifications 2020

Landmacon, as part of its activities, follows certified management systems.





_services

The company is active in the following fields :

- Landscape study and design
- Project management at landscape projects
- Landscape construction and maintenance
- Environmental projects (management of sewage treatment plants and waste management).



Landscape study and desing



Landscape construction



Landscape maintenance



Technical consulting

_locations

Landmacon provides fast and prompt services to customers inside, outside of Attica as well as abroad..



Thessaloniki

Chalkidiki

Tempi

Katerini / Korinos / Makrigialos / Aeginio

Malakasa

Evinohori, Mesologgi

Markopoulo

Malesina

Megalopoli

Iliki

Loutraki

PATHE Motorway

Ionian Odos Motorway

Kentriki Odos Motorway

Marathonos Highway

Corfu

Zakynthos

Kefalonia

Skopelos

Skiathos

Santorini

Mikonos

Lesbos

Samos

Kos

Poros

Spetses

Rhodes

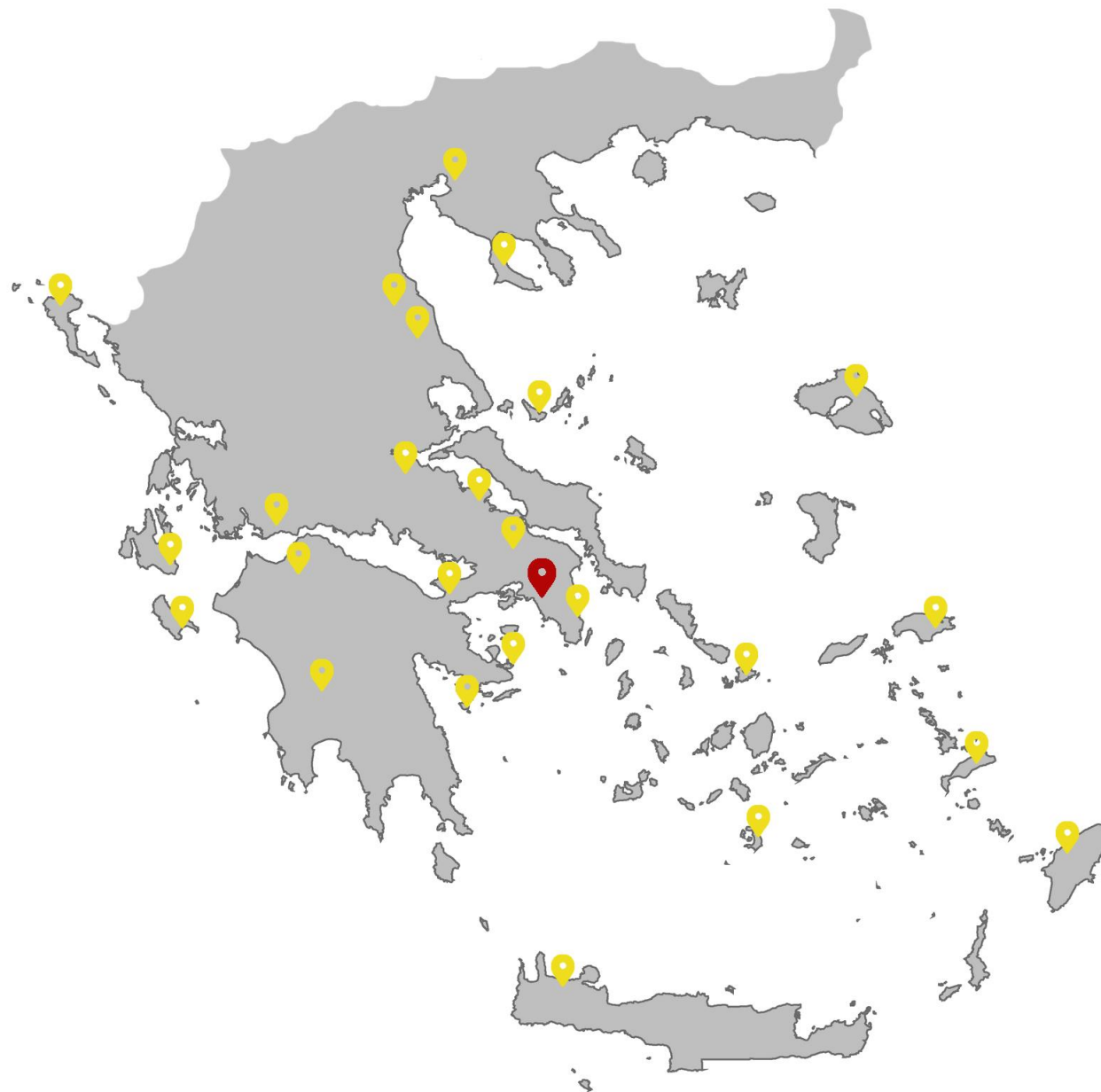
Crete



Athens



Romania





Projects



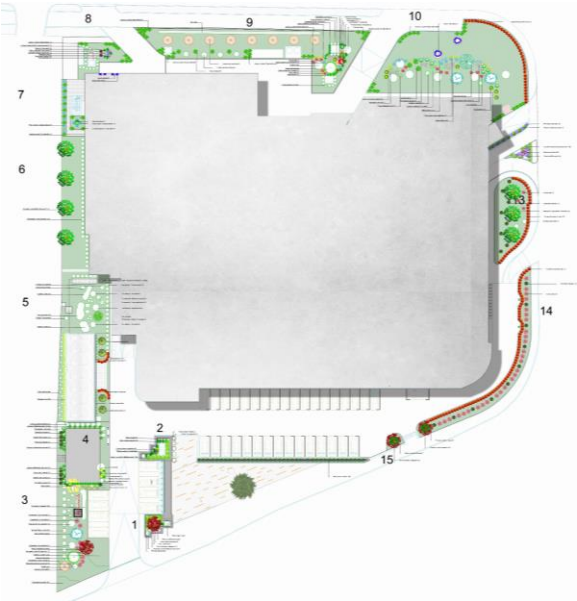
Landscape Design

Landmacon's experienced scientific staff undertakes both landscape and irrigation systems studies for large-scale projects. At the same time the collaboration with specialized scientists (landscape architects, agronomists, soil specialists, engineers, etc.) ensures the proper design and implementation for every project.

Global Worth Campus , Romania



Global Worth Tower, Romania

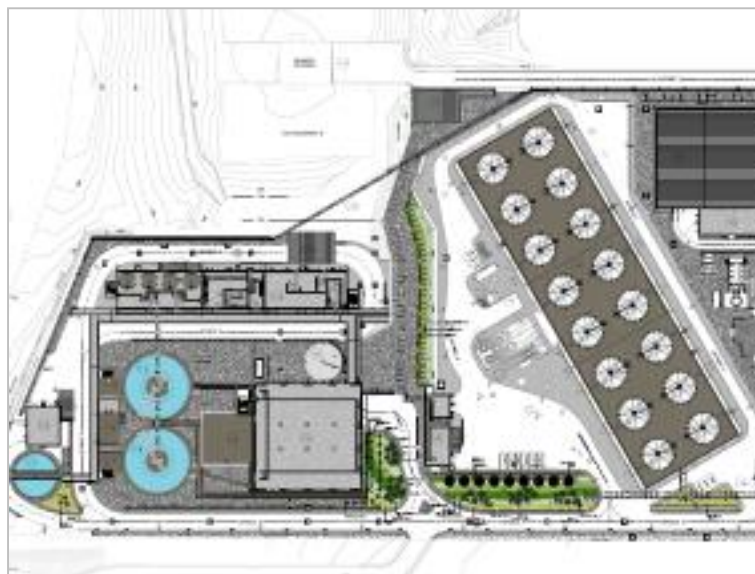
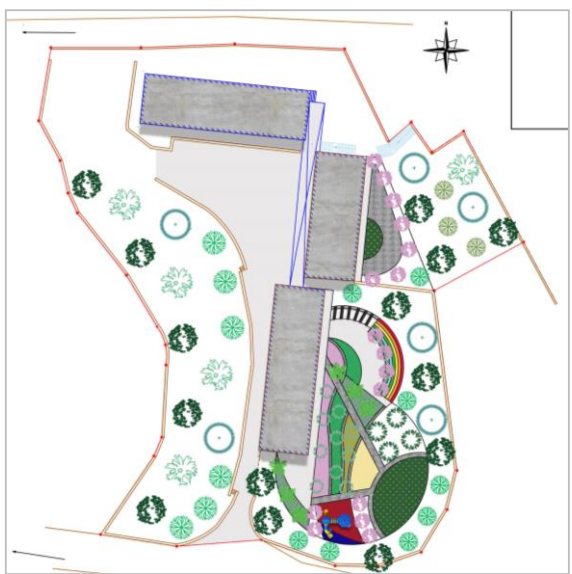




Park landscape proposal , Neos Voutzas

Landscape proposal for kindergarten of Penteli

SES of Megalopoli no.5 (TERNA SA).



Private residence in Philothei

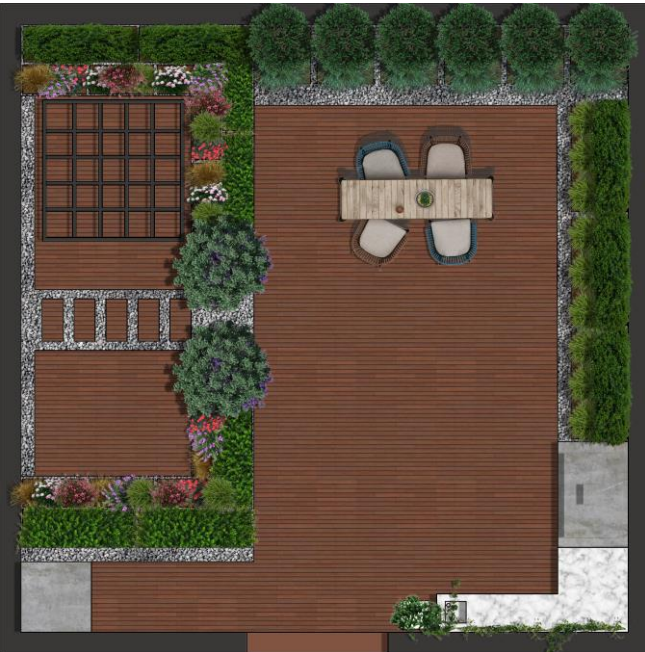


Private residence in Marousi



Private residence in Pallini

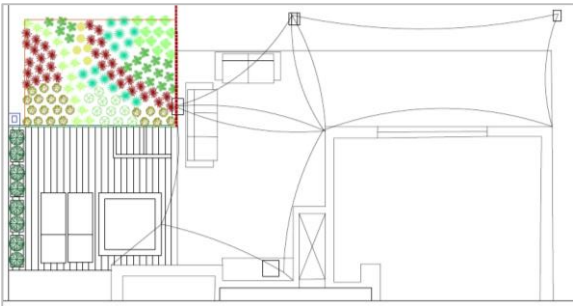




Nea Odos Administration Center, Varimpompi



Roof Garden design in apartments building, Glyfada



Configuration of (experiential) courtyard area of Primary School in Keratsini



Landscape study in Schisto



The background of the image is a close-up photograph of cracked and broken asphalt. A yellow graphic overlay is present, consisting of a horizontal bar and a diagonal line extending from the bottom right corner towards the top right.

Projects



Construction

Landmacon's many years of experience in the field of exterior design makes it one of the most dynamic companies in this field, with a multitude of projects throughout Greece.

Northern roadway interchange, Katerini, Korinos, Makrigialos, Aeginio

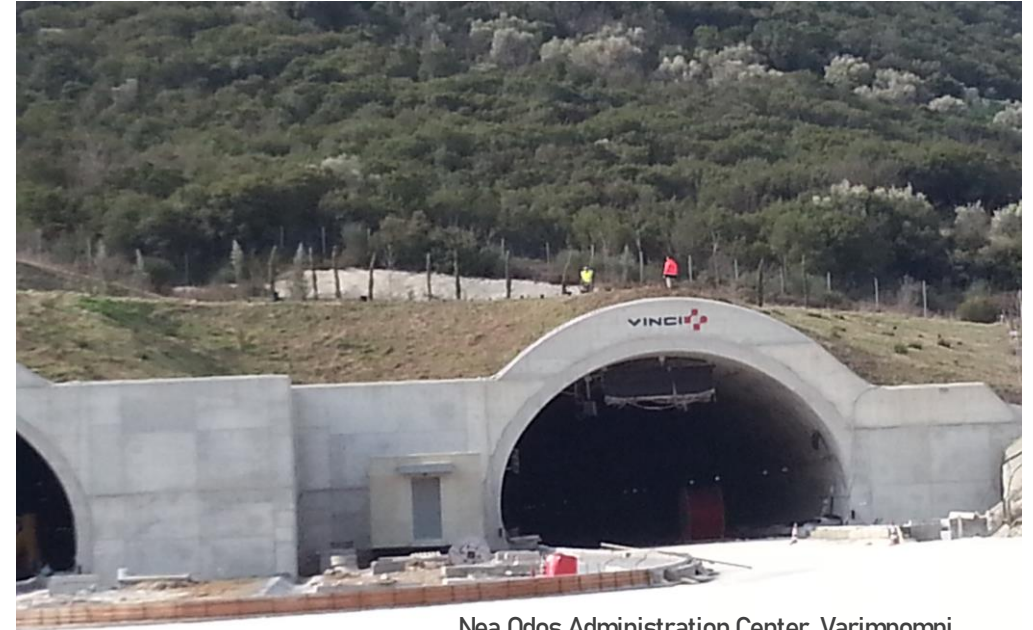


Ionia Odos Motorway





Marathonos Highway



Nea Odos Administration Center, Varimpompi

TEP of Agia Triada



Nea Odos maintenance center, Malakasa





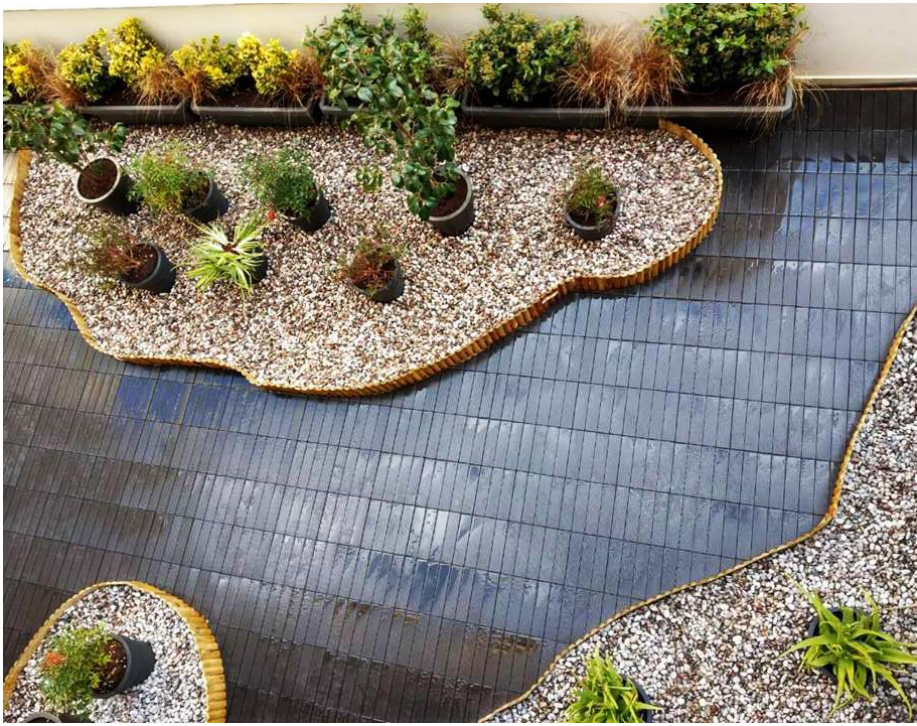
Outdoor construction Ivy Club, Spetses

Mare West Park Construction, Corinth

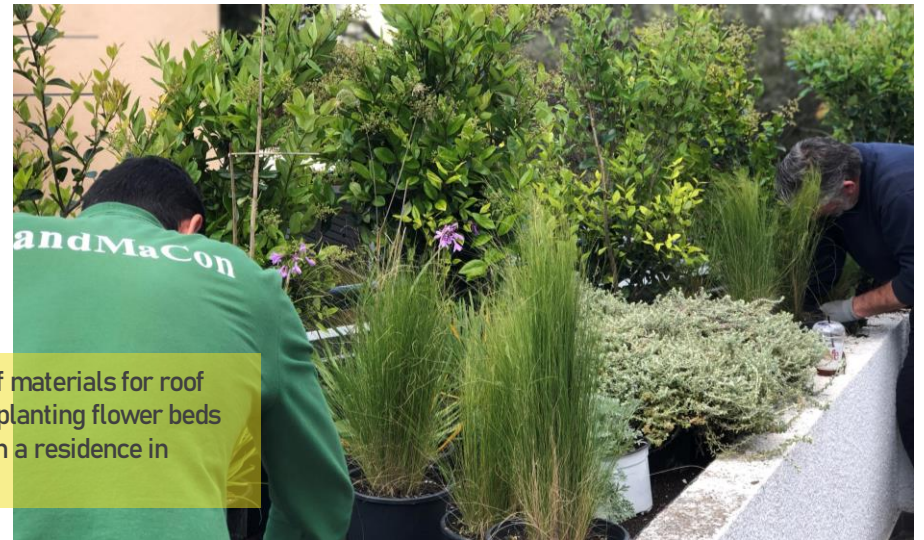


Construction of outdoor areas and roof gardens at Butterfly building, Chalandri

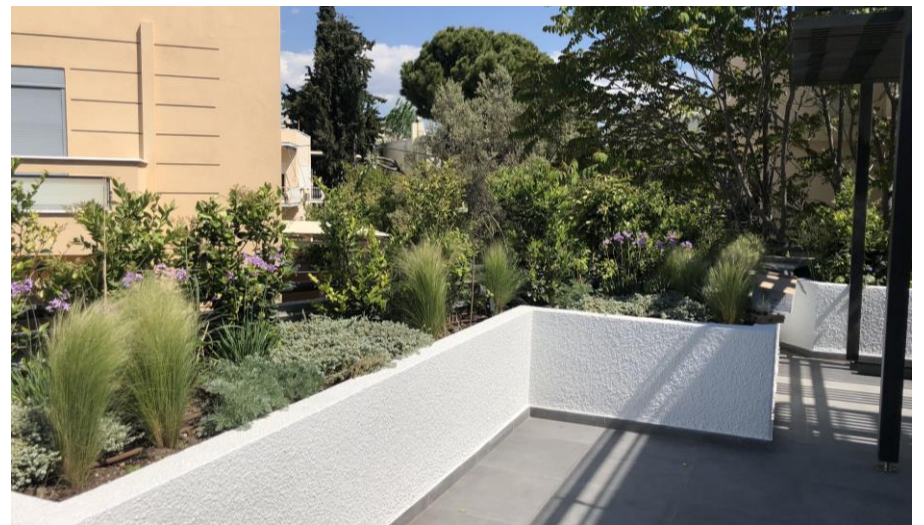




Configuration of office space in the National Bank of Greece, planting and decking.

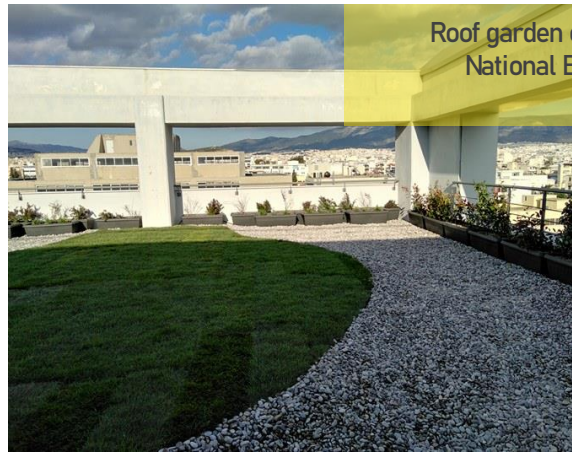


Installation of materials for roof gardens and planting flower beds of a terrace in a residence in Psychiko.





Roof garden construction in a seaside residence in Skopelos

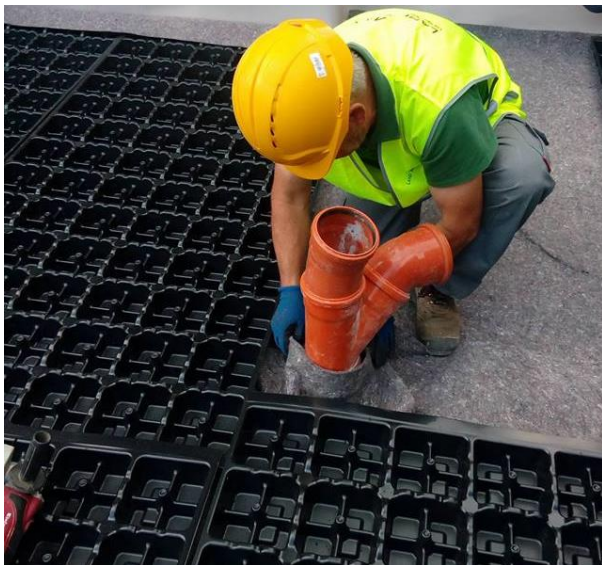


Roof garden construction at National Bank of Greece, Moschato



Roof garden construction at Nea Odos building, Varimpompi

Roof garden construction an Butterfly building, Chalandri



Construction of outdoor space at a seaside residence in Skopelos

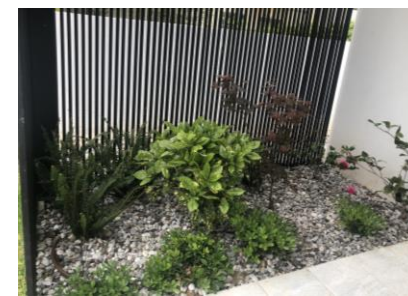


Exterior design and construction of a private residence in Filothei





Landscape construction and creating vegetable garden in pots at a residence in Pallini



Exterior design and construction of a private residence in Pikermi

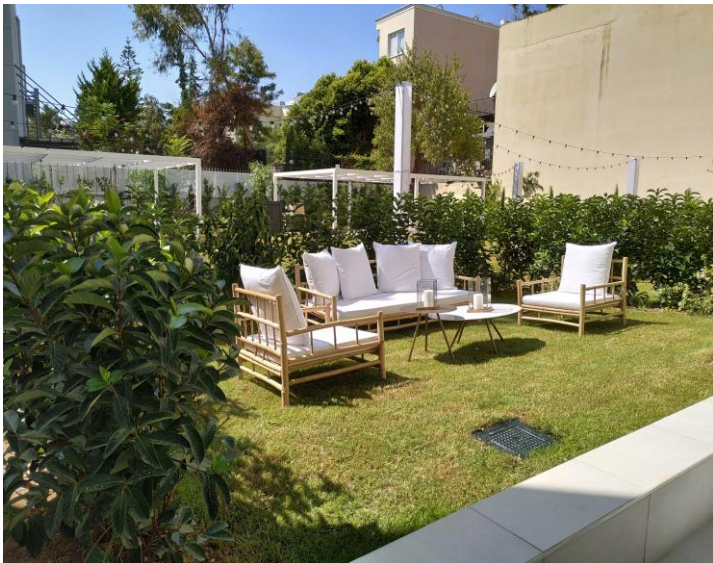
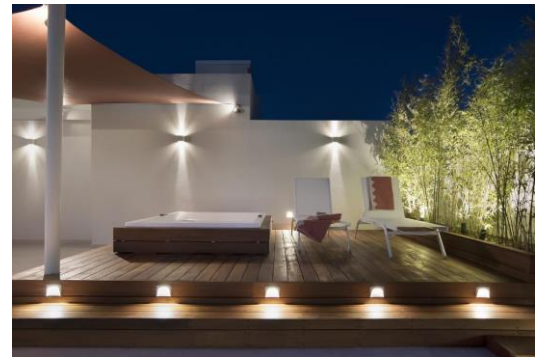
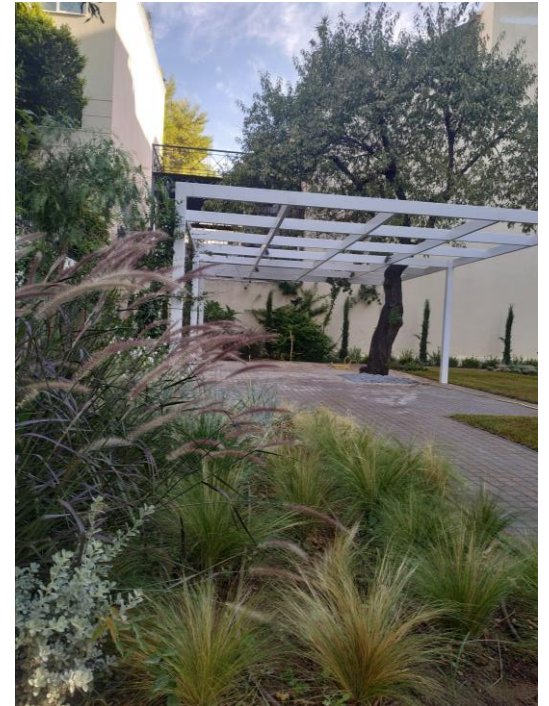


Exterior design and construction of a private residence in Kefalari



Exterior design and construction of a private residence in Marousi







Projects



Environmental

LANDMACON undertakes technical consulting services in environmental projects. For example:

- Operation and maintenance of industrial and municipal waste treatment plants.
- Restoration of congested areas (rubbish dumps, construction sites, etc.)
- Participation in soil decontamination research programs.





Restoration of former ATEMKE construction site, Iliki





Projects

dMa Con



Maintenance

Landmacon provides integrated professional management of landscape areas.

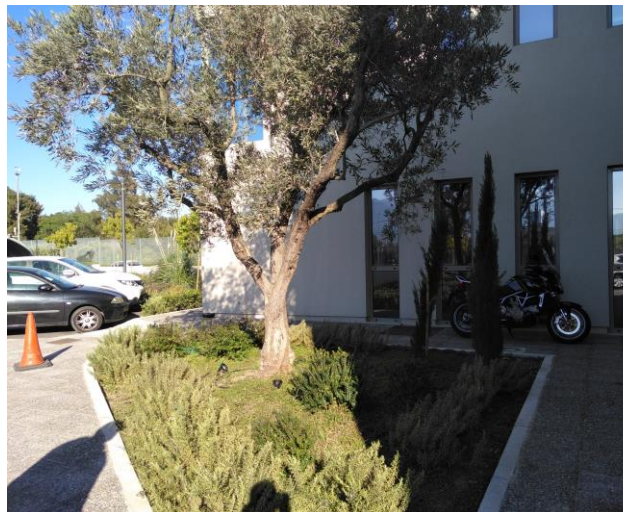




Maintenance of the Nea Odos De-Snowing Center, Malakasa



Maintenance at the administration building of Nea Odos, Varympompi



Maintenance at Fast pass center, Agia Triada





Before



After



AIRPORTS
ZANTE
THESSALONIKI
CORFU
KEFALONIA
KOS
MYKONOS
MYTILENE
RHODES
SAMOS
SANTORINI
SKIATHOS
CHANIA

Maintenance of ecological park in Neo Psychiko



Temporary nursery maintenance in Lykovrisi

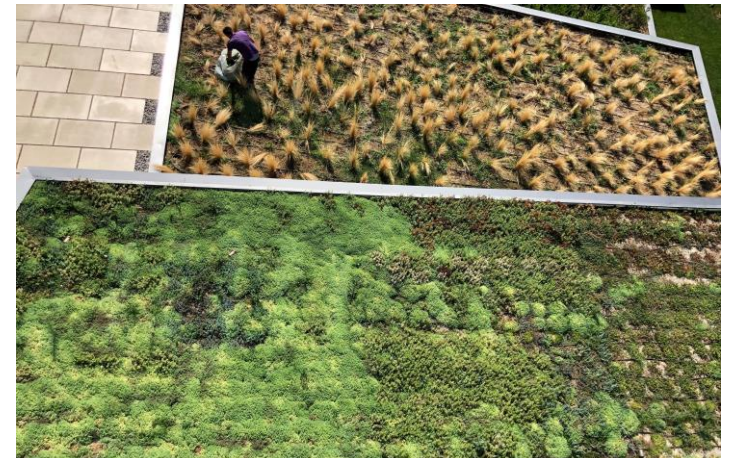


Maintenance of the Panathinaikos Training Center



Maintenance of a football field in the Municipality of Malesina

Maintenance of green roofs and outdoor spaces in Butterfly building, Chalandri







Projects

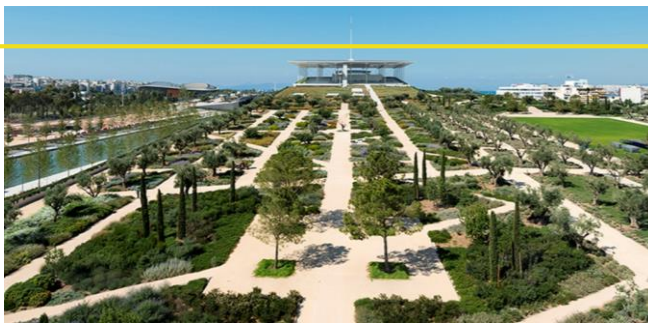
LanMaCon



Technical consulting

The result of the long-term experience in the field of landscape projects is the provision of technical consulting services in project management of any scale.







"Upground" compound in Bucharest, Romania







They trust us

48 Plapouta ave., Irakleion,
Athens, Greece pc. 14122
Tel: 2107474076
Fax: 2107474077
E-mail: info@landmacon.gr
www.landmacon.gr



Landmacon

